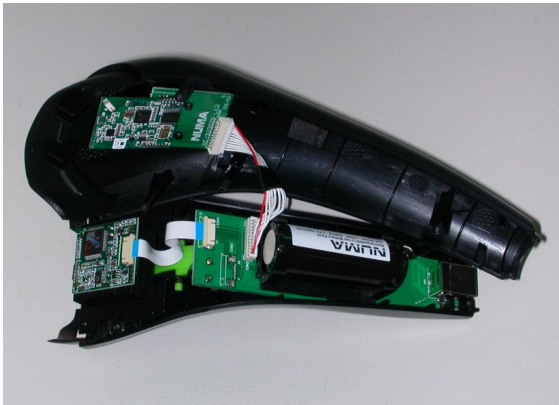




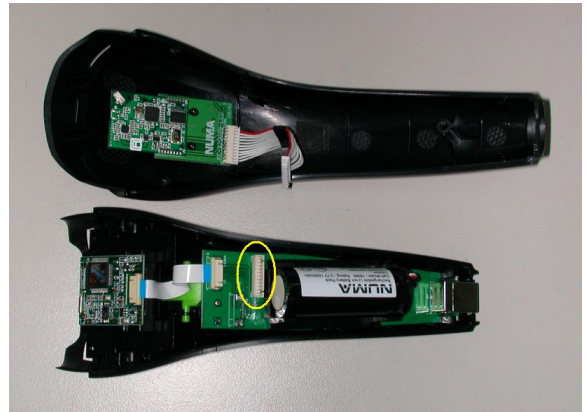
1. Remove the front case from the scanner



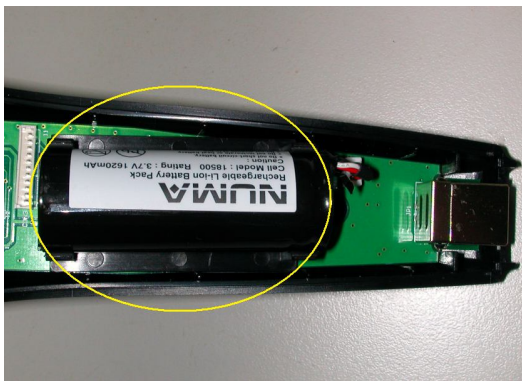
2. Unscrew the screws circled in yellow



3. Apart upper cover as photos



4. Disconnect the RF module circled in yellow



5. Find the battery in the battery bracket



6. Disconnect the battery from PCB board



7. Hold the trigger for 1min to releaseremaining power



8. Connect the RF module back to PCB



9. Place the battery back to the bracket



10. Re-connect the battery back to PCB board



10. Press the trigger to see if blue LED comes up, if blue is on please assembly the scanner back